

Walk 5 - Big Wheaton Permissive Footpath, Churchway, Coffinswell

Distance: About 1 mile (1.6km)

Time: About 30 minutes (circular route)

Terrain: Narrow roads without pavements – rutted, rough and steep tracks – meadow – possibly some short but muddy sections at the bottom of the hill

1 Start the walk from the Linny Inn in Coffinswell and walk down the lane opposite the Linny car park.

2 After 50 yards look to your left between two high beech hedges and you will see the 12th century church and Devon manor house (formerly a courthouse) next to it, which was a farmhouse until fairly recently.

3 Continue along the lane and, at the point that the lane bends to the left, take the track to the right between two fields (marked as Churchway and John Musgrave Trail). After an initial gentle slope, the track rises steeply between high trees until you reach the brow of the hill where you can enjoy the view to the left across the hamlet of Dacombe.

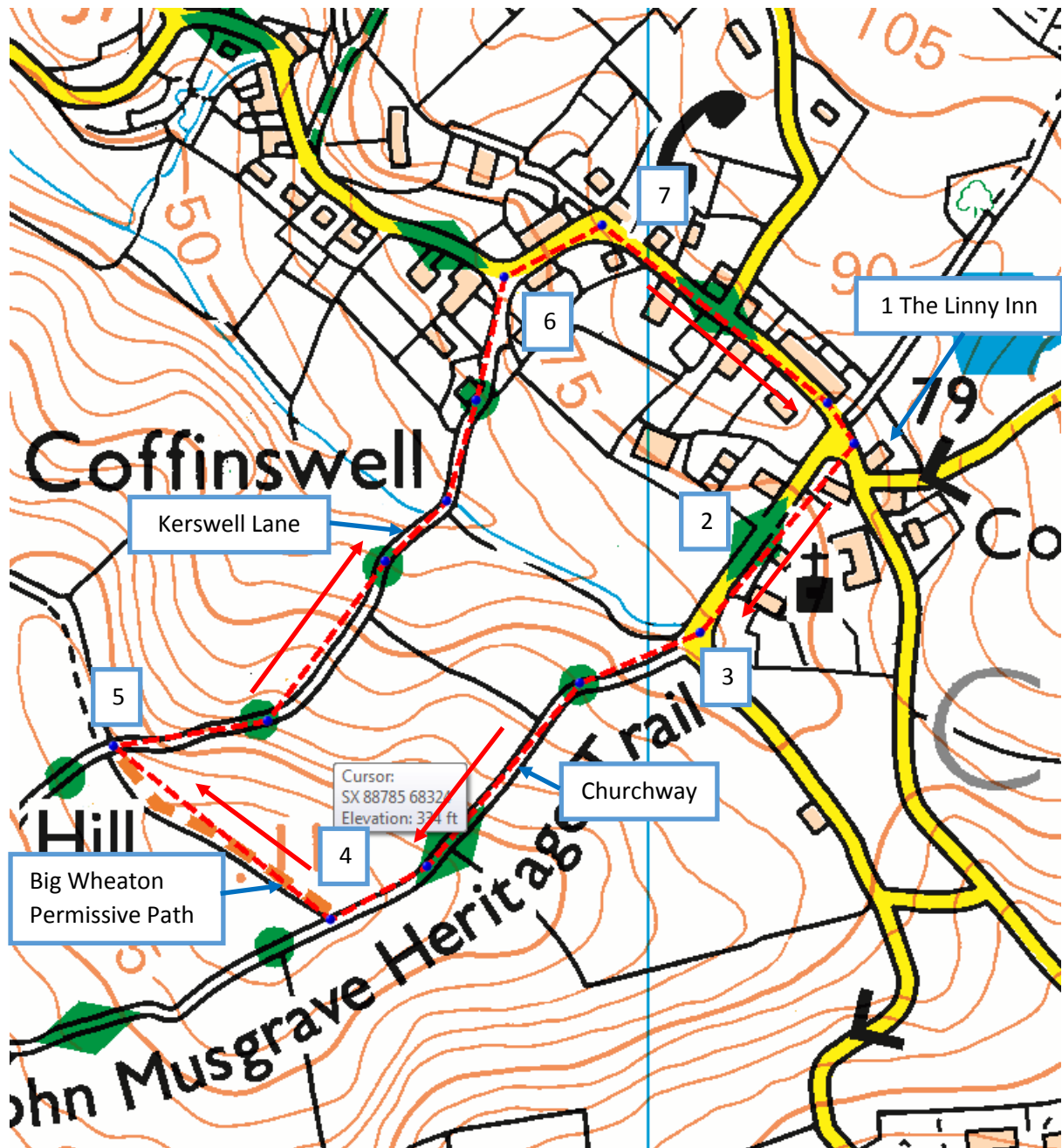
4 On your right is a metal gate with a signpost 'Big Wheaton Permissive Footpath'. Go through the gate, ensuring that you close and fasten it, as sheep and cows are often grazing in the field. Keeping the hedge on your left, walk across the brow of the hill which gives you elevated views of the village of Coffinswell including the parish church tower.

5 At the far end of the field is another metal gate (take care again to close this securely as well). This brings you to an area bordered by farm gates, with Kerswell Lane track off to your left and right. Take the Kerswell Lane track to your right, which goes steeply back down to Coffinswell and brings you to a bend in the road at the bottom of a hill (known as School Hill or Post Office Hill).

6 The thatched cottage on the corner was the village school and the Post Office used to be in one of the pair of thatched cottages at the top of the hill. Turn right up to the top of the hill where you will find a seat to rest on, put there by the villagers for the Queen's Silver Jubilee.

7 Pass the post box and telephone box (Grade II listed!) on your left and about 250 yards on you are back to the Linny Inn once more.

Walk 5 - Big Wheaton Permissive Footpath, Churchway, Coffinswell





1 The Linny Inn



Start down the road opposite the Linny



2 St Bartholomew's Church

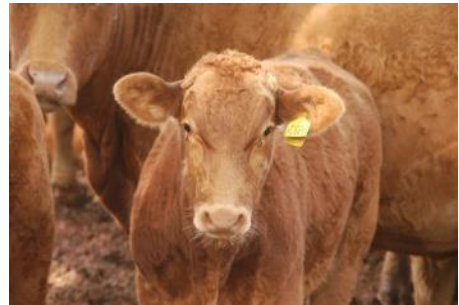




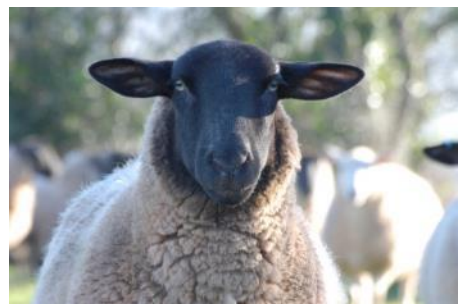
3 Turn right onto Churchway



The bottom of the lane might be muddy!



4 Gate into the field and Big Wheaton Permissive Path





5 Gate at the far end of Big Wheaton Permissive Path



6 The School House



Walk on up the hill



7 Grade II listed phone box



Back to the Linny again